

ONCOLOGY

ANNUAL REPORT 2015-2016



**PARK NICOLLET FRAUENSHUH CANCER CENTER
REGIONS HOSPITAL CANCER CARE CENTER
HEALTHPARTNERS CANCER CARE CENTER – RIVERSIDE
PARK NICOLLET CLINIC & SPECIALTY CENTER – BURNSVILLE
PARK NICOLLET CLINIC & SPECIALTY CENTER – MAPLE GROVE**

Park Nicollet Frauenshuh
Cancer Center



HealthPartners
Cancer Care Centers

Power of partnerships

In 2015, HealthPartners Cancer Care Centers and Frauentshuh Cancer Center joined together to provide our patients with our most comprehensive care yet, including faster, better access to care and clinical trials. **We share similar values and philosophies** that inspired us to improve care for our patients while creating incredible synergy within our teams. We are excited to share with you the work that we've done together in our first combined annual report.

Improved care means that we offer **all the services a patient may require, close to home**. With seven locations across the metro area, including a new clinic in Maple Grove, and six locations in western Wisconsin, our care is more convenient than ever for patients and their families. We believe that's important when facing a potentially life-altering diagnosis such as cancer. From infusion and radiation therapy to genetic counseling and clinical trials, we offer comprehensive, advanced care. We also think our services such as one-on-one counseling, nutrition and rehabilitation services are also vital to caring for the whole patient.

Our care is backed by **strong research** and continued advancement in clinical trials. **Arkadiusz Dudek, MD**, recently joined our team. He is a recognized leader in bringing Phase 1 clinical trials to patients. Many people previously traveled as far away as Chicago to access these new emerging treatments. **Phase 1 clinical trials**, in addition to more than 100 other trials, are **now available** to our patients in the Twin Cities. This work helps to continually advance the science and care of cancer treatments. It's something we strongly value and are thrilled to have Dr. Dudek join our team.

Receiving a diagnosis of cancer is overwhelming, leaving people with more questions than answers. That's why we stand behind our **48-hour promise**. We guarantee that a patient can be seen by an oncologist within two days of a cancer diagnosis. Patients get the answers they need right away so they can **worry less** and **immediately begin treatment planning**. Providing answers and personalized care to our patients is a priority for us.

Together, we are carrying forward our long traditions of **high quality patient care, innovative treatments and clinical research** that benefit our patients and our community. As a result of our high standards, both programs are accredited by the American College of Surgeons' Commission on Cancer and the American Society of Clinical Oncology's Quality Oncology Practice Initiative.

If you have questions about this report or the exceptional care we strive to offer every patient, please contact us.



RANDY HURLEY, MD
Medical Director
HealthPartners
and Regions Hospital
Cancer Care Centers
randy.w.hurley@healthpartners.com



MARK A. WILKOWSKE, MD
Medical Director
Park Nicollet
Frauentshuh Cancer Center
mark.wilkowske@parknicollet.com



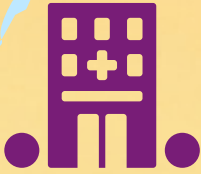
LAURA HOLASEK
Administrative System Director,
Oncology Services
HealthPartners and Park Nicollet
laura.holasek@parknicollet.com

POWER OF PARTNERSHIPS CANCER CARE LOCATIONS





St. Croix Regional Medical Center
Cancer Center of Western Wisconsin*



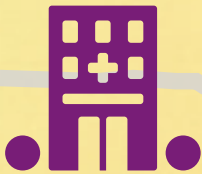
Osceola Medical Center
Cancer Center of Western Wisconsin*



Amery Hospital and Clinic
Cancer Center of Western Wisconsin*



Westfields Hospital
Cancer Center of Western Wisconsin*



Hudson Hospital
Cancer Center of Western Wisconsin*



Western Wisconsin Health
Cancer Center of Western Wisconsin*

WISCONSIN

*HealthPartners provides physician services in partnership with Cancer Center of Western Wisconsin



NEW STAFF

One of the strengths of our program is talented, dedicated colleagues. In 2015-16, we were fortunate to have the following people join our team:

Kevin Collis, RN
Nurse Navigator

Jennifer Colvin, MD

Christine Dill
Tumor Registry

Arkadiusz Dudek, MD

Kim Fenton, MBA
Frauenshuh Oncology Manager

Kristi Hembre, PA-C

Joanna Hill, BA, CCRP
Senior Manager Early Phase One
Research Program

Anne Hopkins, RN, OCN
Manager Medical Oncology
and Infusion

Katie Jelle, PA-C

Yan Ji, MD

Cindy Johnston, MS, CGC
Genetic Counselor

Karen Lin, CTR
Tumor Registry

Ayse Malcolm, MD

Jason Oakes, PA-C

Denise Shannon, LICSW
Social Worker

Brian Trottier, MD

HIGHLIGHTS OF 2015-2016

AWARDS AND ACHIEVEMENTS

Many of our team members are active in education, research and advocacy to improve cancer care. Here are some of the recent awards and achievements:

Dylan Zylla, MD – 2016 Association of Community Cancer Center (ACCC) Innovator Award winner for “Establishing Personal Pain Goals to Improve Patient Care and Decrease Costs”

Yan Ji, MD – 2016 Minnesota Society of Clinical Oncology Outstanding Fellow Award

Kurt Demel, MD – Member of the American Society of Clinical Oncology Government Relations Committee

Rich Petersen, MD – Top physician to accrue patients to Metro Minnesota Community Oncology Research Consortium (MMCORC). He was also part of a panel discussion at the Minnesota Cancer Care Moonshot Summit (6/26/16)

Dan Anderson, MD – Recently named as the Principle Investigator for Metro Minnesota Community Oncology Research Consortium (MMCORC)

Amy Spomer, MD – Member of the Cancer Legal Line’s Board of Directors

Rachel Lerner, MD – Abstract featured at the American Society of Clinical Oncology Annual Meeting titled, “Medical Scribes in a Community Oncology Clinic”

Wendy Ness, RN, and Mary Holland, RN – Presented at the spring Oncology Nursing Society, “Patient Simulation and Chemotherapy Administration.”

Susan Koering, MEd, RHIA, CTR - Served as the Program Committee Chair for the National Cancer Registrars Association

Vicki Norton, MHA, RN – Served as Director-at-Large for the National Oncology Nursing Society

Sarah Dold, RN, and Katka Grajcarova, RN from 4 East, Methodist Hospital – Received Safety “Good Catch” awards

HELEN BERG AWARD is designated for staff members who provide an outstanding patient experience:

Sandra M. Oman, RN – 2015 Helen Berg Award winner

Susan K. Wangen, RN – 2016 Helen Berg Award winner

STRONG TIES TO THE MINNESOTA SOCIETY OF CLINICAL ONCOLOGY

We continue to provide leadership and support to the Minnesota Society of Clinical Oncology. This group works to provide advocacy for patients with cancer and promote standards of excellence for high-quality cancer care:

President: Balkrishna Jahagirdar, MD
Immediate Past President: Lorre Ochs, MD, FACP
Member at Large: Mark Menge, MD

CONTINUED LEADERSHIP OF THE METRO MINNESOTA NURSING SOCIETY

We are proud to have several colleagues in leadership roles within the organization. Their focus is to advocate for their profession, their colleagues and their patients:

President: Nancy Anson, RN, OCN
Past President: Norma Hocking, RN, OCN
Secretary: Adina Peck, ANP, GNP
Treasurer: Cindy Jacobson, RN, OCN
Director at Large: Karen Miller, RN, OCN and Megan Lifto, DNP, MS, RN, OCN
Government Relations: Ann Deshler, RN, BSN, OCN
Membership Chair: Cindy Ouimet, RN, OCN
Nominating Chair: Lynn Johns, RN, OCN
Annual Conference Chair: Adina Peck, ANP, GNP

NEW CREDENTIALS

In the past year, many of our team members have mastered additional skills designed to improve care through credentialing:

Certified Cancer Registrar:

Sarah Blanco, CTR
Karen Lin, CTR

Oncology Certified Nurse:

Julie Brewer, RN, OCN
Alyona, Dellwo, RN, OCN
Sarah Van Peurse, RN, OCN
Melanie Schweitzer, RN, OCN
Barb Sweeney, RN, OCN

Hospice and Palliative

Care Certifications:

Sarah Dold, RN, CHPN
Christine Edwards, RN, CHPN



GROWTH AND HEALING

Our programs continue to grow to meet the needs of the expanding population in the Twin Cities. In addition, our patients can participate in a unique program designed to promote healing:



MAPLE GROVE CLINIC & SPECIALTY CENTER ONCOLOGY AND INFUSION CLINIC opened in 2015. This specialty clinic offers the expert care you need in a convenient northwest metro location.



REGIONS CANCER CARE CENTER was selected to participate in the 2016 PaintFest America Tour. This is a hospital healing arts program in which patients paint portions of a large mural.

EDUCATION AND RESEARCH

CLINICAL TRIALS PARTICIPATION: ACCESS TO NEW AND PROMISING THERAPIES FOR CANCER TREATMENT

Nearly every advance in medicine requires results from clinical trials participation. This is true for recommendations in regard to how to treat strep throat, stroke, heart attack or cancer. Clinical trials participation advances scientific knowledge but also provides patients access to new, cutting edge treatments that may not otherwise be available to them. With the rapid pace of new cancer drug discovery, a robust clinical trials program at HealthPartners and Park Nicollet will bring new treatment options closer to home for patients who may otherwise need to travel to obtain access to these clinical trials.

A major strength of a combined HealthPartners and Park Nicollet oncology program is the ability to increase access for patients to take part in clinical trials. We have just added an early phase clinical trials program in 2016 that will bring new, previously unavailable cancer therapies to the Twin Cities. This program expands on the clinical trials opportunities already provided by HealthPartners Institute. Park Nicollet, HealthPartners, Regions and Riverside Cancer Centers participate in the Metro-Minnesota Clinical Oncology Research Consortium (MMCORC): this is a consortium of 22 metro hospitals that have access to over 100 National Cancer Institute-sponsored clinical trials.

HealthPartners Riverside Clinic, Park Nicollet and Regions Hospital often enroll more patients in clinical trials than any of the other 20 hospitals in the MMCORC consortium. In 2015, Regions Hospital enrolled 10 percent of new patients in clinical trials. Park Nicollet Frauenthuh Cancer Center enrolled seven percent of new patients in cancer clinical trials in 2015.





ONCOLOGY SYMPOSIUMS AND SIMULATIONS PROVIDE CONTINUING EDUCATION

In collaboration with the staff at the Cancer Center of Western Wisconsin, Park Nicollet Frauenshuh Cancer Center and HealthPartners Cancer Care Centers provide oncology education symposiums for health care providers.

For the spring 2015 symposium on Melanoma, **Karla Rosenman, MD**, presented on Dermatologic Evaluation of Melanoma; **Keith Heaton, MD**, highlighted Surgical Aspects of Melanoma Treatment; **Bal Jahagirdar, MD**, shared New Insights Into the Treatment of Metastatic Melanoma – among other presentations on melanoma

For the fall 2015 Simulation Skills Primer, **Stephanie Kroon, PA-C, MPAS**, discussed Managing Chemotherapy Spills and Managing Hypersensitivity Reactions; **Monique Giordana, PharmD, BCOP**, shared Managing Extravasations and Chemo Administration

For the spring 2016 Education Symposium on Cancer and Sexuality, **Deanna Teoh, MD**, discussed How Treatment of Cancer Can Affect Sexual Health; **Tricia Zupert, NP**, addressed Sexual Function and Quality of Life After Cancer – among other presentation on sexuality in cancer recovery

For the fall 2016 symposium on Palliative Care and End of Life, **Randy Hurley, MD**, presented Palliative Care from a Medical Oncology Perspective; **Dylan Zylla, MD**, highlighted Cancer Pain: Updates on Personalized Pain Goals and Long-acting Opioids; **Arthur Wineman, MD**, focused on Medical Cannabis – among other important presentations



TRAINING THE NEXT GENERATION OF ONCOLOGISTS

One of the core missions of our organization is to train the next generation of physicians and scientists to be leaders in the field of oncology. Regions Hospital is proud to host clinical training sites for the University of Minnesota Hematology and Oncology Fellowship Program. For more than 25 years, this training has included direct supervision of patient care, didactic lectures and informal teaching sessions. Each year, more than 50 hours of didactic lectures are provided to University of Minnesota medical students, internal medicine residents, hematology-oncology fellows, primary care and emergency room physicians, oncology nurses and pharmacists.



EDUCATION AND RESEARCH

HEALTHPARTNERS INSTITUTE: ADVANCING HEALTH AND HEALTH CARE

HealthPartners Institute is a 501c3 non-profit organization with researchers dedicated to conducting high-quality, public-domain health research. The institute is an affiliate member of the Cancer Research Network (CRN) and a participant in the National Cancer Institute-funded CRN IV program. HealthPartners research includes projects and initiatives of Park Nicollet. Pamala Pawloski, PharmD, is the site primary investigator and a CRN scholar, a role that allows her to be a mentor to new investigators.

SELECT CANCER-RELATED PUBLICATIONS:

Dudek AZ. Management of Resistance to EGFR TKI-Targeted Therapy of Lung Cancer: Lessons in Monitoring Cancer Evolution. *Oncology (Williston Park)*. 2016 Jul 15;30(7). pii: 217974. PMID: 27432365.

Amin A, **Dudek AZ**, Logan TF, Lance RS, Holzbeierlein JM, Knox JJ, Master VA, Pal SK, Miller WH Jr, Karsh LI, Tcherepanova IY, DeBenedette MA, Williams WL, Plessinger DC, Nicolette CA, Figlin RA. Survival with AGS-003, an autologous dendritic cell-based immunotherapy, in combination with sunitinib in unfavorable risk patients with advanced renal cell carcinoma (RCC): Phase 2 study results. *J Immunother Cancer*. 2015;3:14. doi: 10.1186/s40425-015-0055-3. eCollection 2015. PMCID: PMC4404644.

Blaes AH; Rehman A; Vock DM; Luo X; **Menge MR**; Yee D; Missov E; Duprez D. Utility of high-sensitivity cardiac troponin T in patients receiving anthracycline chemotherapy. *Vasc Health Risk Manag*. 2015 Nov 24;11:591-4. PMCID: PMC4664531.

Cohn DE; **Shimp WS**. The cost implications of the use of pegylated liposomal doxorubicin when choosing an anthracycline for the treatment of platinum-resistant ovarian cancer: A low-value intervention? *Gynecol Oncol Rep*. 2015 Aug;13:47-8. PMCID: PMC4563795.

Ojevwe FO, Ojevwe CD, Zacny JP, **Dudek AZ**, Lin A, Kohlitz P. Treatment of Multiple Unresectable Basal Cell Carcinomas from Gorlin-Goltz Syndrome: a Case Report. *Anticancer Res*. 2015;35(3):1777-81.

Hansford S; Kaurah P; Li-Chang H; Woo M; Senz J; Pinheiro H; Schrader KA; Schaeffer DF; Shumansky K; Zogopoulos G; Santos TA; Claro I; Carvalho J; Nielsen C; Padilla S; Lum A; Talhouk A; **Baker-Lange KM**; Richardson S; Lewis I; Lindor NM; Pennell E; MacMillan A; Fernandez B; Keller G; Lynch H; Shah SP; Guilford P; Gallinger S; Corso G; Roviello F; Caldas C; Oliveira C; Pharoah PD; Huntsman DG. Hereditary diffuse gastric cancer syndrome: CDH1 mutations and beyond. *JAMA Oncol*. 2015 Apr;1(1):23-32.

Hararah MK; Pollack CE; Garza MA; Yeh HC; Markakis D; Phelan-Emrick DF; Wenzel J; **Shapiro GR**; Bone L; Johnson L; Ford JG. The relationship between education and prostate-specific antigen testing among urban African American medicare beneficiaries. *J Racial Ethn Health Disparities*. 2015 Jun;2(2):176-83.

Javaid S, Terai K, **Dudek AZ**. Chondroitin Sulfate Proteoglycan-4 Does Not Protect Melanoma Cells During Inhibition of PI3K and mTOR Pathways. *Anticancer Res*. 2015;35(3):1279-84.

Horne HN; Phelan-Emrick DF; Pollack CE; Markakis D; Wenzel J; Ahmed S; Garza MA; **Shapiro GR**; Bone LR; Johnson LB; Ford JG. Effect of patient navigation on colorectal cancer screening in a community-based randomized controlled trial of urban African American adults. *Cancer Causes Control*. 2015 Feb;26(2):239-46. PMCID: PMC4370183.

Luo J; Hendryx M; Virnig B; Wen S; Chlebowski RT; **Chen C**; Rohan TE; Tinker LF; Wactawski-Wende J; Lessin L; Margolis KL. Pre-existing diabetes and breast cancer prognosis among elderly women. *Br J Cancer*. 2015 Sep 1;113(5):827-32. Project Number: A05-112 WHI – KM.

Marshall JK; Mbah OM; Ford JG; Phelan-Emrick DF; Ahmed S; Bone L; Wenzel J; **Shapiro GR**; Howerton M; Johnson L; Brown Q; Ewing A; Pollack CE. Effect of patient navigation on breast cancer screening among African American Medicare beneficiaries: a randomized controlled trial. *J Gen Intern Med*. 2016 Jan;31(1):68-76. PMID: PMC4700012.

Pawloski PA; Larsen M; Thoresen AA; Giordana MD. Pegfilgrastim use and bone pain: a cohort study of community-based cancer patients. *J Oncol Pharm Pract*. 2016 Jun;22(3):423-9. Project Number: A13-092 CSF Chart Review.

Shapiro AC; Adlis SA; Robien K; Kirstein MN; Liang S; Richter SA; **Lerner RE**. Randomized, blinded trial of vitamin D3 for treating aromatase inhibitor-associated musculoskeletal symptoms (AIMSS). *Breast Cancer Res Treat*. 2016 Feb;155(3):501-12. Project Number: A16-199.

Keshtgarpour M, Tan WS, Zwanziger J, Awadalla S, Langi FG, **Dudek AZ**. Prognostic Value of Serum Proteomic Test and Comorbidity Index in Diversified Population with Lung Cancer. *Anticancer Res*. 2016 Apr;36(4):1759-65.

Saba R, Alsayed A, Zacny JP, **Dudek AZ**. The Role of Forkhead Box Protein M1 in Breast Cancer Progression and Resistance to Therapy. *Int J Breast Cancer*. 2016;2016:9768183. doi: 10.1155/2016/9768183. Epub 2016 Jan 31.

Sek AC, Xie Z, Terai K, Long LM, Nelson C, **Dudek AZ**, Druey KM. Endothelial Expression of Endothelin Receptor A in the Systemic Capillary Leak Syndrome. *PLoS One*. 2015;10(7):e0133266. doi: 10.1371/journal.pone.0133266. eCollection 2015. [PMCID: PMC4503617]

Kim C, Economou S, Amatruda TT, Martin JC, **Dudek AZ**. Prognostic significance of microscopic tumor burden in sentinel lymph node in patients with cutaneous melanoma. *Anticancer Res*. 2015;35(1):301-9.

Gummadi T1, Zhang BY, Valpione S, Kim C, Kottschade LA, Mittapalli RK, Chiarion-Sileni V, Pigozzo J, Elmquist WF, **Dudek AZ**. Impact of BRAF mutation and BRAF inhibition on melanoma brain metastases. *Melanoma Res*. 2015;25(1):75-9.



Pam Powolsk, PharmD, is a senior researcher at HealthPartners Institute.

SELECT FUNDED RESEARCH PROJECTS:

Pawloski, PA, CRN4: Cancer Research Resources & Collaboration in Integrated Health Care Systems, Awarded September 2013.

Pawloski, PA, Developing an Algorithm to Identify Febrile Neutropenia Risk in Patients with Cancer using the VDW, Awarded March 2014.

Pawloski, PA, Developing a Model to Predict Neutropenia Risk in Patients with Cancer using the VDW, Completed August 2014.

Pawloski, PA, Pilot Testing a Biorepository Framework to Enable Genomic Research at HPI, Awarded Dec 2015.

Pawloski, PA, CRN4: Cancer Research Resources & Collaboration in Integrated Health Care Systems, Awarded April 2016.

Pawloski, PA, BBCIC Comparative Effectiveness of Biosimilars, Awarded April 2016.

SKIN CANCER SCREENING

Our combined oncology departments, in conjunction with our dermatology departments, hosted a free skin cancer screening event for the community on May 14, 2016. There were 103 participants. Follow-up was recommended for nearly 30 percent of the participants.

32%

MALE

68%

FEMALE

58 YEARS

AVERAGE AGE

40%

FAMILY HISTORY OF SKIN CANCER

11%

PERSONAL HISTORY OF SKIN CANCER

36%

TANNING BED USAGE

29%

FOLLOW-UP RECOMMENDED

SCREENING AND PREVENTION

BE PINK AND BREAST CENTER AWARENESS MONTH This year, the Be Pink campaign spread across HealthPartners and Park Nicollet Jane Brattain Breast Center to encourage Twin Cities women to be aware, proactive and empowered with their breast health. This includes promoting screenings and early breast cancer detection. Park Nicollet's mobile mammography unit, Mammo a-go-go, also sees an increase in use during the campaign.



HealthPartners, Regions Hospital and Park Nicollet Jane Brattain Breast Center were the presenting sponsors of local radio station KS95's Team Moon & Staci for Race for the Cure on Mother's Day. Our sponsorship was promoted during on-air spots and with a digital presence. Using Mammo a-go-go as a backdrop for our booth space, we had a prominent presence at the race and handed out breast health materials. In total, the effort delivered over 3 million impressions.

COLORECTAL CANCER SCREENING As part of Colorectal Cancer Screening Awareness month, a social media campaign and video monitors in our clinics reminded people to schedule a CRC screening. In addition, the Get Your Rear in Gear Race for colon cancer was held in March in Eden Prairie. Approximately 1,500 participants stopped by our event tent for information and giveaways.

We have a partnership with Sage, Minnesota's cancer screening program for low income residents, to distribute FIT tests to those who don't want to undergo a colonoscopy. FIT is an at-home stool test that looks for certain gene changes that are sometimes found in colon cancer cells. It can be used as a preliminary screening for those who meet certain qualifications.

As part of our ongoing effort to increase screenings, focus groups throughout the Twin Cities have been scheduled for fall 2016 to identify barriers and perceptions around colon cancer screening. Some of the questions seek to understand the participants understanding of FIT testing as well as feedback on how to effectively encourage more screenings.



Approximately 1,500 participants stopped by our tent at the Get Your Rear in Gear Race for information and giveaways.

COMMUNITY WELLNESS INITIATIVES According to the American Cancer Society, certain cancer deaths can be prevented by living healthier lifestyles and “making healthy choices like not smoking, staying at a healthy weight, eating right, keeping active and getting recommended screening tests.” HealthPartners promotes health and well-being in our communities by providing resources and support through a variety of projects and initiatives. Here are just a few: School Environment Kit and School Challenge, including yumPower, PowerUp and BearPower initiatives, are geared towards improving our community’s health through increased activity and better food and beverage choices. HealthPartners continues to support Statewide Health Improvement Projects (SHIP) across Minnesota. It’s about creating good health by decreasing obesity and reducing the number of people who use tobacco.

ACCOUNTABILITY MEASURES These accountability measures indicate the portion of breast and colorectal cancer patients treated according to recognized standards of care by diagnosis year. The results are reported to the National Cancer Data Base (NCDB), a joint program of the American College of Surgeons (ACoS) and the American Cancer Society. NCDB is a nationwide oncology outcomes database for more than 1,500 commission-accredited cancer programs.

NCDB SELECT BREAST AND COLORECTAL MEASURES		Estimated Performance Rates			
		2012	2013	2014	National Benchmark*
Breast Cancer					
Radiation therapy is administered within one year (365 days) of diagnosis for women under age 70 receiving breast-conserving surgery for breast cancer.	Health Partners	92.3%	91.2%	95.5%	90%
	Park Nicollet	99.2%	96.4%	99.2%	
Combination chemotherapy is considered or administered within four months (120 days) of diagnosis for women under 70 with AJCC T1c N0 M0, or Stage II or III ER and PR negative breast cancer.	Health Partners	81.8%	92.3%	100%	90%**
	Park Nicollet	100%	100%	100%	
Tamoxifen or third generation aromatase inhibitor is considered or administered within one year (365 days) of diagnosis for women with AJCC T1c N0 M0, or Stage II or III ER and/or PR positive breast cancer.	Health Partners	100%	95.6%	97.6%	90%
	Park Nicollet	94.8%	98.2%	98.6%	
Colon Cancer					
Adjuvant chemotherapy is considered or administered within four months (120 days) of diagnosis for patients under the age of 80 with AJCC T1c Stage III (lymph node positive) colon cancer.	Health Partners	100%	100%	100%	90%**
	Park Nicollet	100%	100%	100%	
At least 12 regional lymph nodes are removed and pathologically examined for resected colon cancer.	Health Partners	95.6%	92.7%	95.7%	85%
	Park Nicollet	89.1%	86.4%	94%	

*Commission-approved programs **Noted as 2013 benchmark from NCDB.

ONCOLOGY REGISTRY

MOST COMMON CANCER SITES

The four most common cancers for HealthPartners and Park Nicollet patients in 2015 (excluding skin cancers) were breast, lung, prostate and colorectal. These four sites account for 47 percent and 44 percent of all cases, according to the American Joint Commission on Cancer (AJCC).

In Minnesota, the most common cancers listed in order of occurrence as published in the American Cancer Society's "Cancer Facts and Figures 2015," are breast, prostate, lung and colorectal. Table 2 compares by site and percent HealthPartners and Park Nicollet case totals with the estimated number of cases in Minnesota and the U.S.

TABLE 1:

FOUR MOST COMMON SITES BY AJCC STAGE AT HEALTHPARTNERS AND PARK NICOLLET

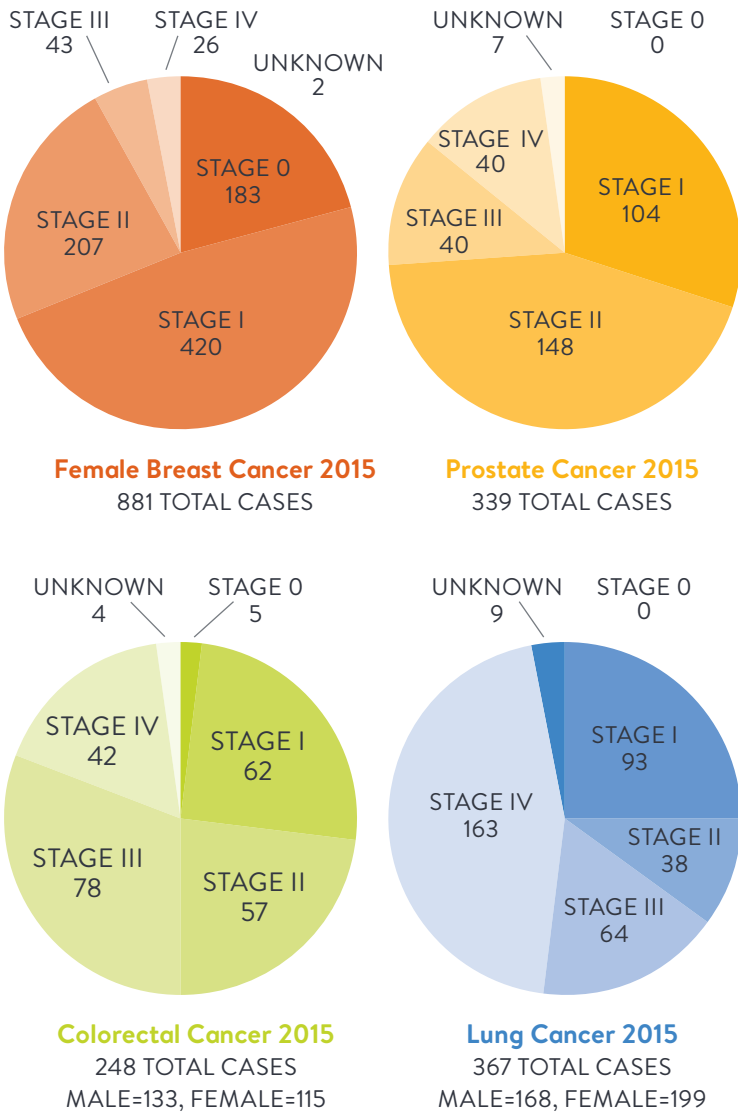


TABLE 2:

FOUR MOST COMMON CANCERS SITES

Table 2 compares, by site and percentage, HealthPartners and Park Nicollet case totals with estimated number of cancer cases in Minnesota and the U.S.

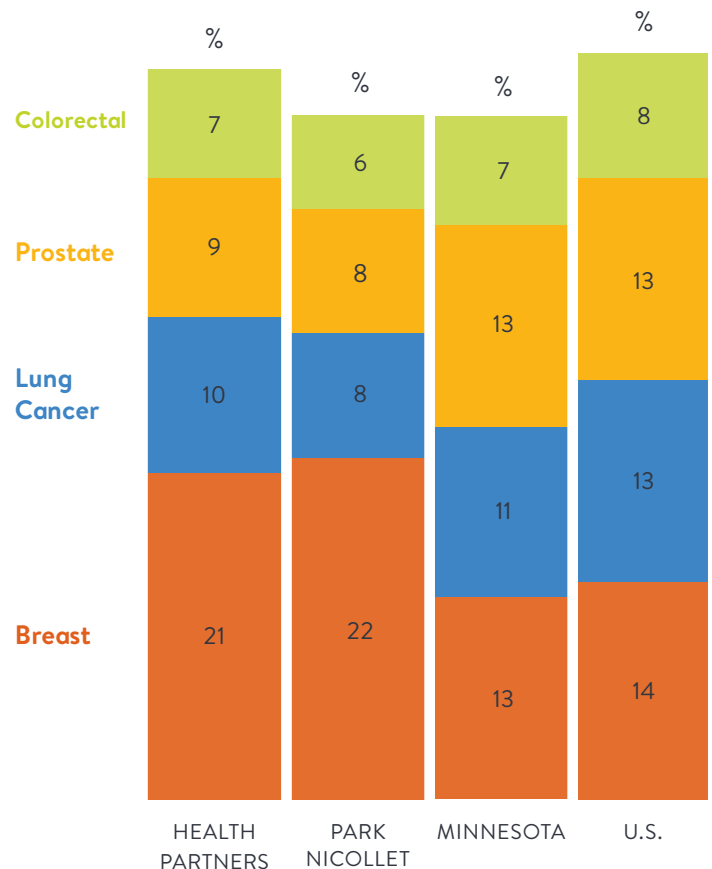


TABLE 3: TUMOR REGISTRY 2015 HealthPartners and Park Nicollet tumor registries contain a comprehensive profile of all newly diagnosed cancer using standards set by the American College of Surgeons.

	2014		2015	
	HEALTH PARTNERS	PARK NICOLLET	HEALTH PARTNERS	PARK NICOLLET
Analytic cases*	1,452	2,118	1,721	2,320
Non-analytic cases**	681	39	362	42
Percentage of cases presented at tumor conferences (General, GYN, Breast, Lung)	38% (560)	28.9% (613)	37% (550)	28.7% (666)

* Analytic: cases diagnosed and/or having initial therapy at HealthPartners or Park Nicollet

** Non-analytic: cases having all initial therapy elsewhere, seen at HealthPartners or Park Nicollet for further care and treatment

TABLE 4: 2015 CANCER CASES DIAGNOSES BY TUMOR SITE AND GENDER

	HEALTH PARTNERS			PARK NICOLLET		
	TOTAL	MALE	FEMALE	TOTAL	MALE	FEMALE
Breast	357	2	355	534	8	526
Skin	195	102	93	364	214	150
Lung	171	87	84	196	80	116
Prostate	149	149	0	190	190	0
Colorectal	115	69	46	133	64	69
Bladder	54	43	11	110	79	31
Lymphoma	70	41	29	91	53	38
Uterus	70	0	70	82	0	82
Other/III-defined	73	22	51	77	25	52
Leukemia	56	32	24	70	46	24
Kidney	47	30	17	61	44	17
Nervous System	44	22	22	56	20	36
Pancreas	43	19	24	55	26	29
Head & Neck	42	31	11	53	35	18
Endocrine	68	18	50	53	15	38
Other GI	69	44	25	42	21	21
Ovary	23	0	23	35	0	35
Unknown Primary	20	9	11	25	10	15
Multiple Myeloma	25	12	13	22	16	6
Esophagus	10	8	2	22	19	3
Anus	7	3	4	20	9	11
Testis	7	7	0	15	15	0
Vulva	6	0	6	14	0	14
TOTAL	1,721	750	971	2,320	989	1,331

QUALITY PERFORMANCE AND IMPROVEMENT

CANCER COMMITTEE MEMBERS 2016

Our cancer committees meet quarterly to review all aspects of our program. This includes information related to cancer conferences, community outreach, research and quality improvement as well as all the teams involved in cancer care.

HEALTHPARTNERS

Sue Braaten, RHIT, CTR
Cancer Registry

Diana Christensen Johnston, RN, OCN
Nurse Manager

Linda Christinsen-Rengel, NP
Breast Health Center

Christine Colbach, MD
Pathology

Kevin Collis, RN OCN
Nurse Navigator

Janel Cox, MD
Radiation Oncology

Kim Duffy, RD
Food and Nutritional Services

Kirsten Erickson, MD
Radiation Oncology

Katherine Fuhrmann
Genetic Counselor

Monique Giordana, PharmD, BCOP
Pharmacist

Holly Guida, RN-BSN, MBA
Oncology Program Manager

Margo Hess, CTR
Cancer Registry

Laura Holasek
Director Cancer Center

Amanda Horn, RN, OCN, BSN
Research Nurse

Randy Hurley, MD
Medical Oncology

Rory Malloy
Quality Management

Todd Morris, MD
General Surgery/Surgical Oncology

Gretchen Niemioja, MD
Rehabilitation Services

James Risser, MD
IM Palliative Care

Rob Ruff
Pastoral Care

James Schlaefter, MD
General Surgery/Surgical Oncology
(Cancer Liaison Fellow/American
College of Surgeons)

Caitlyn Squire, MSW, LICSW
Social Services

Bonnie Sweeney, RN
Nursing

Joe Tashjian, MD
Radiology

Beth Werner, RN, MS, CHPN, CHPCA
HealthPartners Hospice
and Palliative Care



PARK NICOLLET

Christopher Chow, MD
Surgical Oncology, 2016

Britt Erickson, MD
Gynecology Oncology

Whitney Evavold, MD
Hospitalist

Kim Fenton, MBA
Oncology Program Manager

Jim Ferguson
Chaplain

Kelly Furda, MD
Radiologist

Nancy Gelle, BSN, RN
Palliative Care/Home Care/
Hospice

Jennifer Grant
American Cancer Society

Howard Haines, MD
Emergency Medicine

Kristin Hanrahan
Quality Improvement

Megan Hanson, MS, CGC
Genetics

Robert Haselow, MD
Radiation Oncology

Keith Heaton, MD
General Surgery/Surgical Oncology
(Cancer Liaison Fellow/American College of
Surgeons)

Laura Holasek
Director Cancer Center

Anne Hopkins, RN, OCN
Manager, Medical Oncology and Infusion,
Fall 2016

Susan Koering, RHIA, CTR
Oncology Registry

Christian Loger
Jane Brattain Breast Center

Laura Maybon, RN
Oncology Research

Matt McCoy, MD
Pathology

Michael Miovic, MD
Psychosocial Services

Vicki Norton, MHA, RH, ONS
Nursing

Carol Ann Petersen, LICSW, MAHS
Patient Support and Education

Nan Quade, RN, BHS, OCN
Manager, Medical Oncology
and Infusion

Jocelyn Rieder, MD
Urology

Emily Schoh, RH
Nursing

Bryan Schuler, PharmD, BCOP
Pharmacy

Paul Spilde, PT
Rehabilitation Services

Eric Weinberg, MD
Diagnostic Radiology

Mark Wilkowske, MD
Medical Oncology

David Willis, MD
Surgical Oncology

QUALITY PERFORMANCE AND IMPROVEMENT

We continuously measure clinician and system performance to improve quality and to assist in quickly incorporating new medical knowledge into our care. In 2016, we focused on several quality initiatives, including reducing unnecessary costs:

IMPROVED IV IRON PROTOCOL

Colleen Morton, MD, led a review of intravenous iron use across HealthPartners and Park Nicollet. The goal was to determine the most appropriate treatment based on safety, efficacy and cost to decrease unnecessary use of IV iron.

NEW PATIENT CARE GUIDE

Patients with a newly diagnosed cancer often times are in need of information regarding their care and search multiple sources to find answers. A patient care guide was created in collaboration with our patients to answer many common questions and explain cancer care. This new guide is available to patients in the HealthPartners and Park Nicollet oncology care system.

EXPANDED BARCODING OF MEDICATION

Barcoded medication administration ensures the right patient receives the right chemotherapy medication and documents it in the patient's chart. In 2015, Regions Hospital and HealthPartners Riverside Cancer Care Centers joined Fraunshuh Cancer Center in utilizing this technology to ensure chemotherapy treatments are provided safely and accurately.

SIMULATION TRAINING FOR NURSES

Continuing education for nurses is an important aspect of providing high-quality, safe patient care. In partnership with the Regions Hospital Simulation Center, an education curriculum was created to simulate different patient care situations. This work ensures nurses are educated and prepared to respond to all patient care needs, including emergencies and reactions. Due to the comprehensive nature of this education, an abstract on this topic was accepted as a podium presentation at the Oncology Nursing Society Congress Meeting in April 2016 in San Antonio, Texas.

BREAST CANCER RESEARCH STUDY UNDER WAY

In an effort to continually improve breast cancer treatment, a study was launched to evaluate the number of patients with atypia (ALH, ADH, LCIS) that are found to have invasive cancer or ductal carcinoma insitu on surgical excision. Atypia is an accumulation of abnormal cells in the breast which can signal a potential for future development of cancer. Identifying this condition early is important in the prevention, diagnosis and treatment of breast cancer.

RADIATION ONCOLOGY UPDATE

Park Nicollet Radiation Oncology evaluated and developed a bladder-filling protocol for simulation and radiation treatment to ensure optimal cancer care. The goal of this quality improvement work was to have more consistent bladder filling by having patients drink 16 ounces of water prior to treatment to reduce the risk of small bowel morbidity.

RESEARCH STUDY TO IMPROVE RADIATION TREATMENT FOR LUNG CANCER

A radiation oncology study comparing different treatment modalities, treatment time and accuracy was completed. The use of VMAT (volumetric arc therapy) for treating SBRT (stereotactic body radiation therapy) and SRS (stereotactic radiosurgery) patients was assessed by simulating treatment plans on the Novalis and TrueBeam linear accelerators. The study indicated that the TrueBeam is capable of treating SBRT lung patients with a decrease in treatment time and an increase in setup accuracy.

ONCOLOGY TEAM

Daniel Anderson, MD	HealthPartners	Kendra Kubiak, MD	Park Nicollet
Peter Argenta, MD	Park Nicollet	Priya Kumar, MD	HealthPartners
Kacy Berquist, MSN, APRN, NP-C	Park Nicollet	Brenda Larson, MD	Park Nicollet
Linda Carson, MD	Park Nicollet	Rachel Lerner, MD	Park Nicollet
Joel Carter, MD	Park Nicollet	Ayse Malcolm, MD	Park Nicollet
Cathleen Chen, MD	Park Nicollet	Sarah Manuels, MPAS, PA-C, MPH	Park Nicollet
Jennifer Colvin, MD	Park Nicollet	Steven McCormack, MD	HealthPartners
Janel Cox, MD	HealthPartners	Mark Menge, MD	Park Nicollet
Kurt Demel, MD	HealthPartners	Michael Miovic, MD	Park Nicollet
Arkadiusz Dudek, MD	HealthPartners	Kathryn Moore, MD	Park Nicollet
Mary Ehresman, FNP, ADCN	Park Nicollet	Sally Mullany, MD	HealthPartners
Britt Erickson, MD	Park Nicollet	Gretchen Niemioja, MD	HealthPartners
Christine Erickson, MD	HealthPartners	Jason Oakes, PA-C	HealthPartners
Brad Farrell, PharmD	Park Nicollet	Adina Peck, ANP, GNP	Park Nicollet
Lori Fewer, CFNP	Park Nicollet	Richard Peterson, MD	HealthPartners
Monique Giordana, PharmD	HealthPartners	Brian Rank, MD	HealthPartners
Michael Haley, MD	Park Nicollet	Anne Reiber, ANP, GNP	HealthPartners
Robert Haselow, MD	Park Nicollet	Daniel Schneider, MD	HealthPartners
Keith Heaton, MD	Park Nicollet	Melissa Sherman, MD	Park Nicollet
Kristin Hembre, PA-C	HealthPartners	Gary Shapiro, MD	HealthPartners
Randy Hurley, MD	HealthPartners	Wayne Spears, MD	Park Nicollet
Gretchen Ibele, MD	HealthPartners	Mary Spengler, RNC, ANP	Park Nicollet
Lisa Illig, MD	Park Nicollet	Amy Spomer, MD	Park Nicollet
Jeffrry Jaffe, MD	HealthPartners	Deanna Teoh, MD	HealthPartners
Balkrishna Jahagirdar, MD	HealthPartners	Kandice Tolic, NP-WH	HealthPartners
Kathryn Jelle, PA-C	Park Nicollet	Bryan Trottier, MD	Park Nicollet
Yan Ji, MD	HealthPartners	Mark Wilkowske, MD	Park Nicollet
Stephanie Kroon, PA-C	HealthPartners	Dylan Zylla, MD	Park Nicollet



On average, 90% of our patients
would recommend our providers.



MAKE A GIFT – OR VOLUNTEER – AND MAKE A DIFFERENCE

The impact of your donation will enhance the patient and family experience, promote innovation and research and respond to the health care needs of our community. To make a tax-deductible contribution or to join our team of volunteers, please contact us.

REGIONS HOSPITAL FOUNDATION

640 Jackson St.
St. Paul, MN 55101
651-254-2376
rhf@healthpartners.com

PARK NICOLLET FOUNDATION

6500 Excelsior Blvd.
St. Louis Park, MN 55426
952-993-5023
foundation@parknicollet.com

FOR MORE INFORMATION
OR TO MAKE A REFERRAL TO
ANY OF OUR PROGRAMS

Please contact Laura Holasek at
laura.holasek@parknicollet.com
or 651-254-4656