


Registries

HealthPartners periodically targets members at risk of experiencing medication related problems based upon their medical and prescription claims history. Members are invited by letter or secure email to participate in our MTM program and are assigned to one of our network provider locations based upon where they receive care. They are given the appointment scheduling phone number for that location and are asked to call and schedule that appointment. HealthPartners provides information about those targeted members to each participating provider in a registry file on the HealthPartners provider portal. We expect that you will reach out to each member that is invited to participate in the MTM program and encourage them to schedule an appointment with you in a timely manner. You can access the registry by going to the registry section of the HealthPartners provider portal and selecting MTM.

[Home](#)

Shortcuts

[Join our network](#)
[Join our BH network](#) 
[Find a provider](#)
[Register your facility](#)

[Frequently asked questions](#)

Help Center

[Contact Us](#)
Monday – Friday
8 a.m. – 4 p.m. CT
952-883-7505
855-699-6694

[More HealthPartners contacts](#) 


Go to....

[Credentialing and enrollment](#)[Provider forms](#)[EDI- Electronic Transactions](#)

Log on now

 [Forgot Username?](#)[Forgot Password?](#)[Register here](#)

Welcome to the provider portal

MSHO Model of Care Training The [MSHO \(Minnesota Senior Health Options\) Model of Care training document](#)  describes the coordination of care and the structure needed to provide services and care for the MSHO population. CMS (Centers for Medicare and Medicaid Services) and DHS (Department of Human Services) requires providers to complete the Model of Care Training annually.

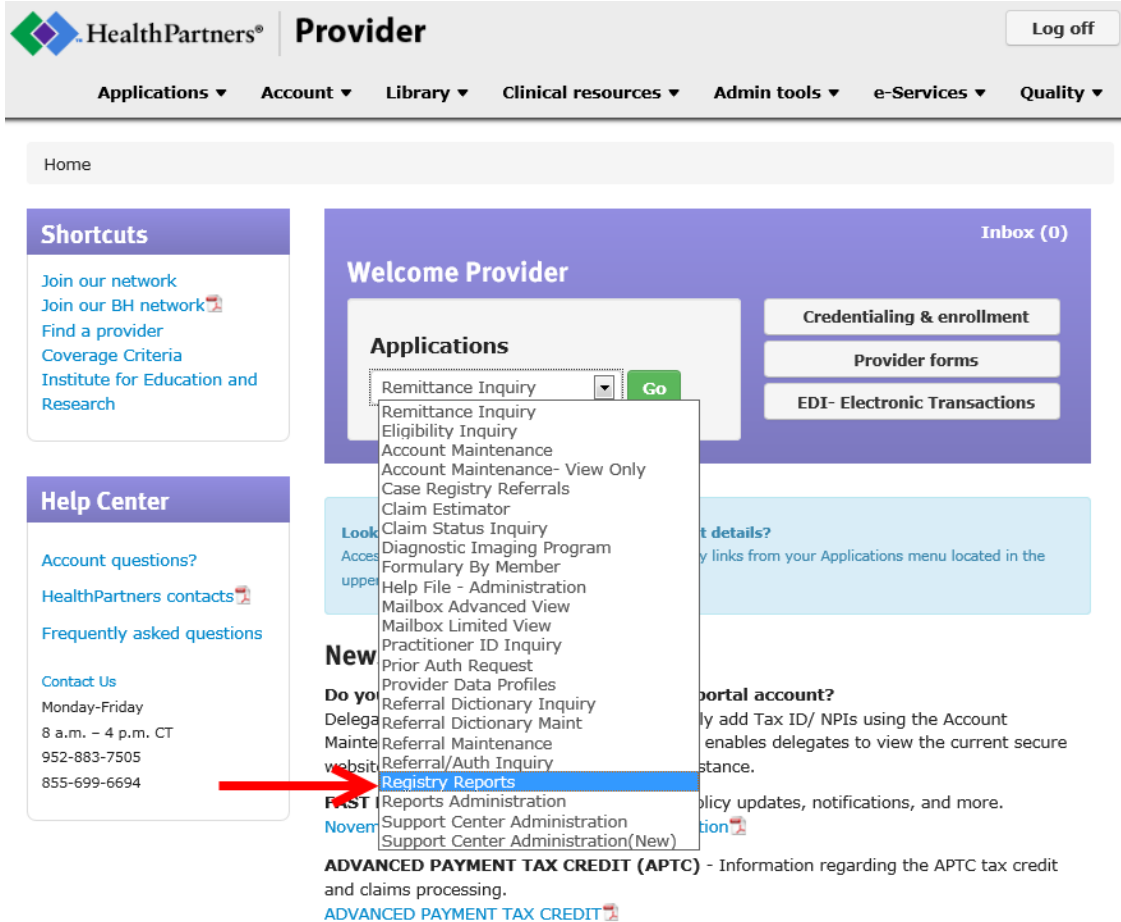
Looking for Remittances (check payment details), claims, or eligibility?

Register today for your provider portal account to access links to these applications and more. Best part, it's free!

[Register your facility](#)

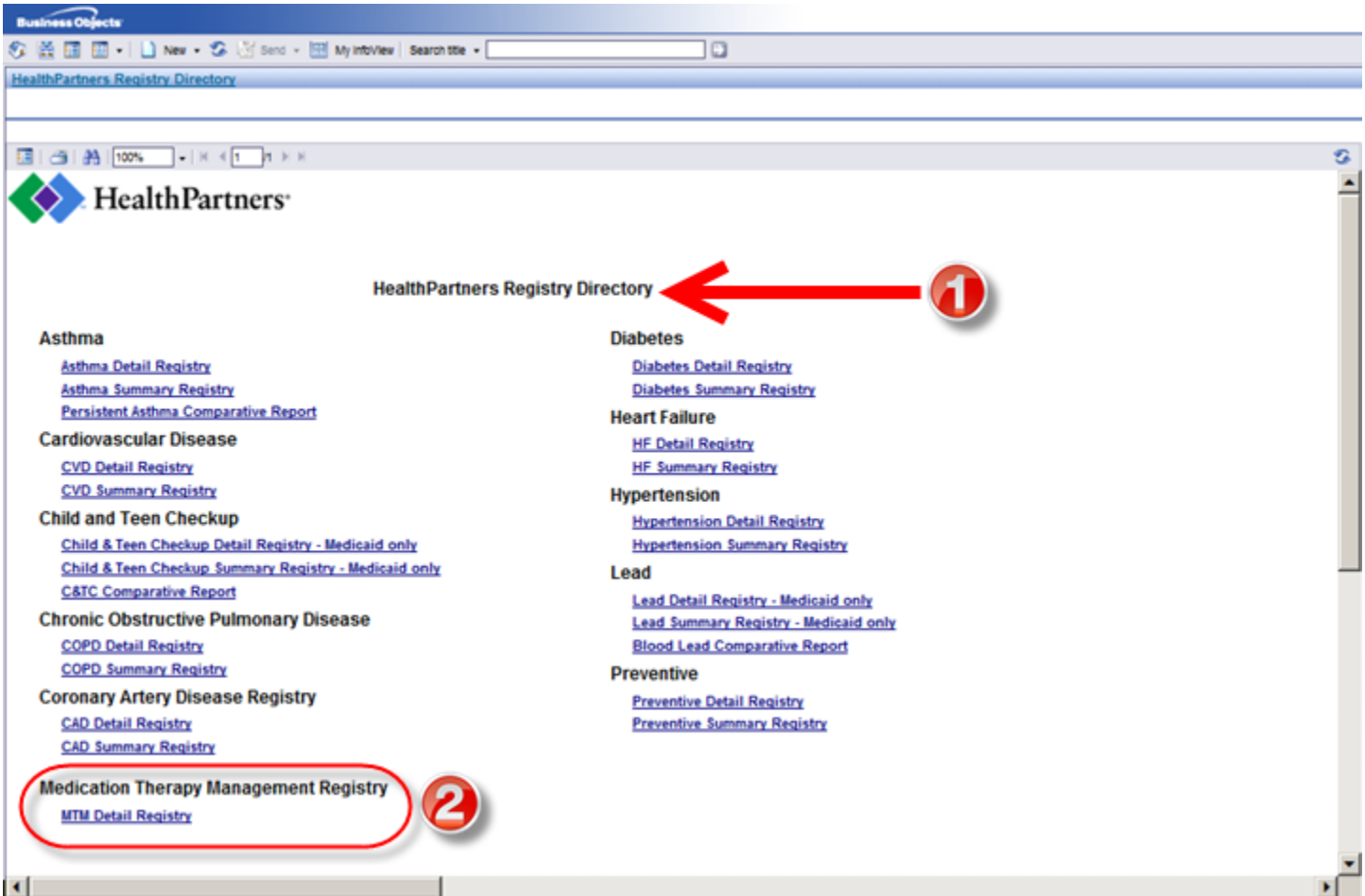
Web Page: www.healthpartners.com/provider

1. Login to the provider portal



1. From the drop down arrow, select “Registry Reports”
2. Click Go

- Note: If you do not see registry access please email mtmsupport@healthpartners.com



Business Objects

HealthPartners Registry Directory

HealthPartners

HealthPartners Registry Directory

Asthma
[Asthma Detail Registry](#)
[Asthma Summary Registry](#)
[Persistent Asthma Comparative Report](#)

Cardiovascular Disease
[CVD Detail Registry](#)
[CVD Summary Registry](#)

Child and Teen Checkup
[Child & Teen Checkup Detail Registry - Medicaid only](#)
[Child & Teen Checkup Summary Registry - Medicaid only](#)
[C&TC Comparative Report](#)

Chronic Obstructive Pulmonary Disease
[COPD Detail Registry](#)
[COPD Summary Registry](#)

Coronary Artery Disease Registry
[CAD Detail Registry](#)
[CAD Summary Registry](#)

Medication Therapy Management Registry
[MTM Detail Registry](#)

Diabetes
[Diabetes Detail Registry](#)
[Diabetes Summary Registry](#)

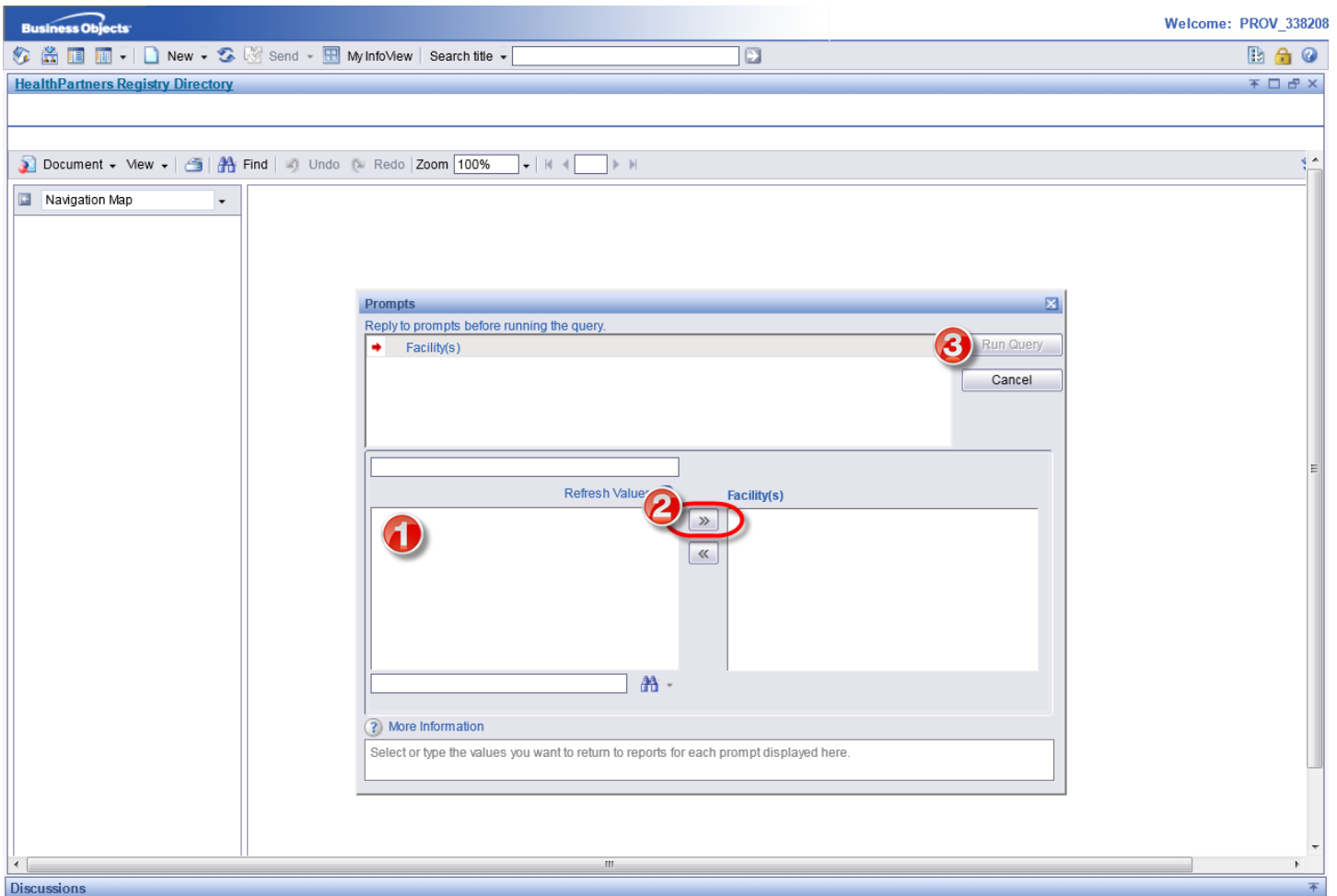
Heart Failure
[HF Detail Registry](#)
[HF Summary Registry](#)

Hypertension
[Hypertension Detail Registry](#)
[Hypertension Summary Registry](#)

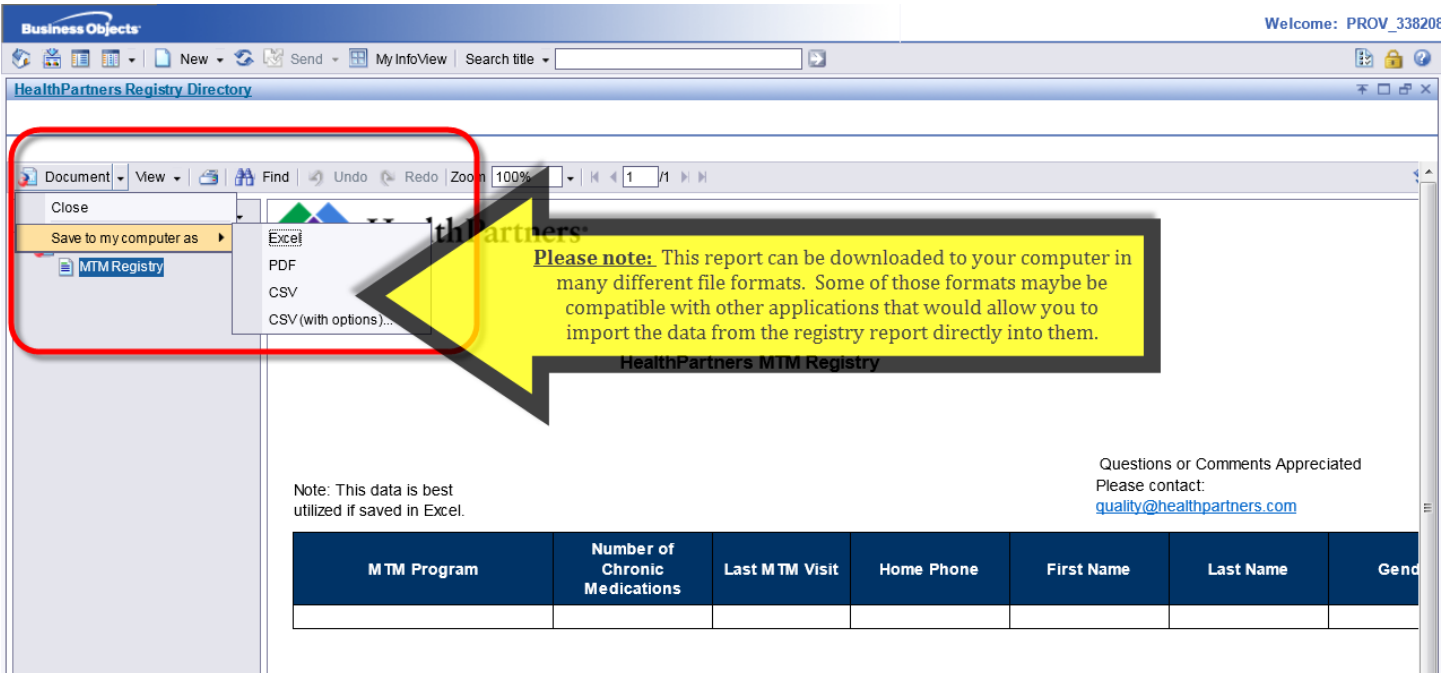
Lead
[Lead Detail Registry - Medicaid only](#)
[Lead Summary Registry - Medicaid only](#)
[Blood Lead Comparative Report](#)

Preventive
[Preventive Detail Registry](#)
[Preventive Summary Registry](#)

1. A new page will open called “**Business Objects**”. Your Pharmacy Name should appear before “**Registry Directory**”.
2. Click on “**MTM Detail Registry**”



1. In the left column, find your facility (there may only be 1 option available). Once you find your facility, click on the name to highlight.
2. Click » right arrows to add your facility to the right column
3. Click on **“Run Query”**
 - Please note: you will have to do this process over each time you need to create a registry.



Business Objects Welcome: PROV_338208

HealthPartners Registry Directory

Document View Find Undo Redo Zoom 100%

Close
Save to my computer as
MTM Registry

Excel
PDF
CSV
CSV (with options)...

Please note: This report can be downloaded to your computer in many different file formats. Some of those formats may be compatible with other applications that would allow you to import the data from the registry report directly into them.

HealthPartners MTM Registry

Note: This data is best utilized if saved in Excel.

Questions or Comments Appreciated
Please contact:
quality@healthpartners.com

MTM Program	Number of Chronic Medications	Last MTM Visit	Home Phone	First Name	Last Name	Gender
-------------	-------------------------------	----------------	------------	------------	-----------	--------

Below is more detail on some of the report columns and what they mean:

- **MTM Program:** The specific MTM program that the member is a part of. For more details about the various programs please visit: <https://www.healthpartners.com/provider-public/pharmacy-services/mtm-services/rxcheckup-program-details>
- **Number of Chronic Medications:** The number of medications (based upon class of medication) with >45 days supply filled in the previous 6 months according to HealthPartners prescription claims
- **Last MTM Visit:** This indicates the date of the last paid claim for an MTM visit (note that claims data may lag by several months)
- **Heart Disease, Diabetes, Asthma columns:** We have received medical and/or prescription claims data indicating the member has one or more of these conditions.
- **High Risk Polypharmacy:** We have received medical and prescription claims indicating 7 or more chronic medication AND a hospitalization in the previous 12 months OR no primary care provider office visit in the previous 12 months
- **Hospitalization within 1 year:** We have received medical claims indicating hospitalization within the previous 12 months
- **High Risk Diabetes, High Risk Heart Disease:** We have received medical and/or prescription claims data indicating the member has diabetes and/or heart disease and have been stratified at high risk when compared to the rest of diabetes/heart disease population.
- **Formulary:** The name of the HealthPartners formulary this member is subject to. HealthPartners formularies can be accessed at: <https://www.healthpartners.com/provider-public/pharmacy-services>